

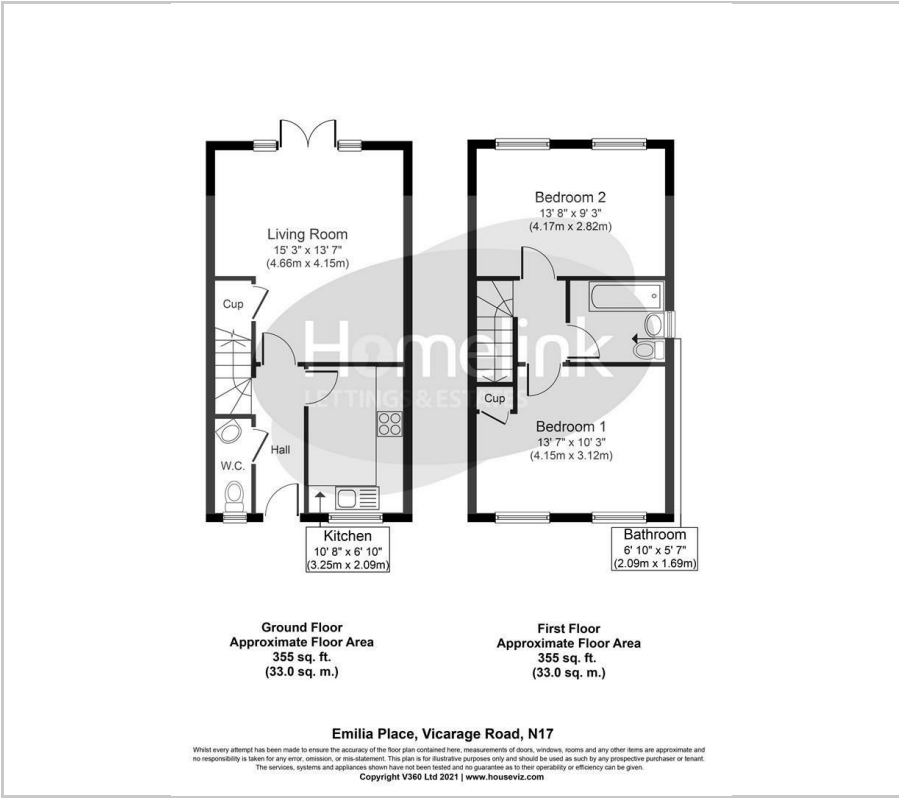


Emilia Place, Vicarage Road, Tottenham, N17

£1,450 PCM

2 1 1 B

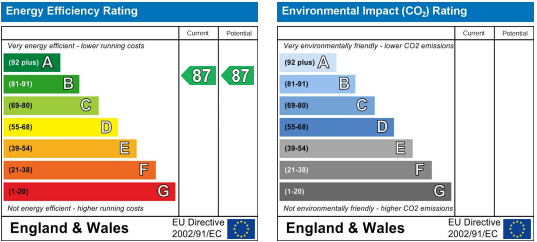
Floor Plan



Area Map



Energy Efficiency Graph



Viewing

Please contact our Homelink Lettings & Estates Office on 0208 882 2112 if you wish to arrange a viewing appointment for this property or require further information.

- Two Bedroom House
- Modern Kitchen
- Great Location
- Gas C/Heating + D/Glazing
- Own Garden
- End of Terrace
- Ideal for Family
- Wooden Flooring
- Own Parking Space
- Available Now

****QUIET LOCATION**** Homelink are pleased to offer for rent this two bedroom end of terrace house that was built recently. The property has just been refurbished and boasts a large reception, large modern kitchen/breakfast room with integrated appliances, ground floor WC, rear garden, parking, fully fitted modern bathroom, wood effect laminate flooring, gas central heating & double glazing.

If you're a Spurs fan, what an ideal location. Ample transport links including both Northumberland Park & White Hart Lane Main line stations, bus links and great road links. Local amenities are on your doorstep along Tottenham High Road.

Do not miss out on this lovely family home. Call to arrange a viewing with one of our friendly lettings team.



These particulars, whilst believed to be accurate are set out as a general outline only for guidance and do not constitute any part of an offer or contract. Intending purchasers should not rely on them as statements of representation of fact, but must satisfy themselves by inspection or otherwise as to their accuracy. No person in this firm's employment has the authority to make or give any representation or warranty in respect of the property.

Homelink Lettings and Estates
62 Chase Side, London N14 5PA
0208 882 2112 homelink.co.uk

